

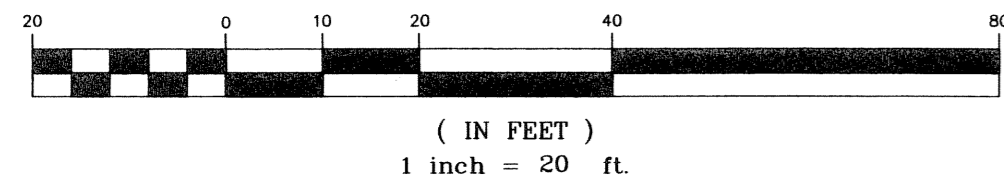
ONE SINGER ISLAND

LYING IN SECTION 22, TOWNSHIP 42 SOUTH, RANGE 43 EAST
CITY OF RIVIERA BEACH, PALM BEACH COUNTY, FLORIDA
SHEET NO. 2 OF 2
SEPTEMBER - 2005

42

STATE OF FLORIDA
COUNTY OF PALM BEACH
This plat was filed for
record at _____ M. this _____ day
of _____ 200_____ and duly
recorded in Plat Book No. _____
on Pages _____ thru _____
SHARON R. BOCK
Clerk & Comptroller
By _____ D.C.

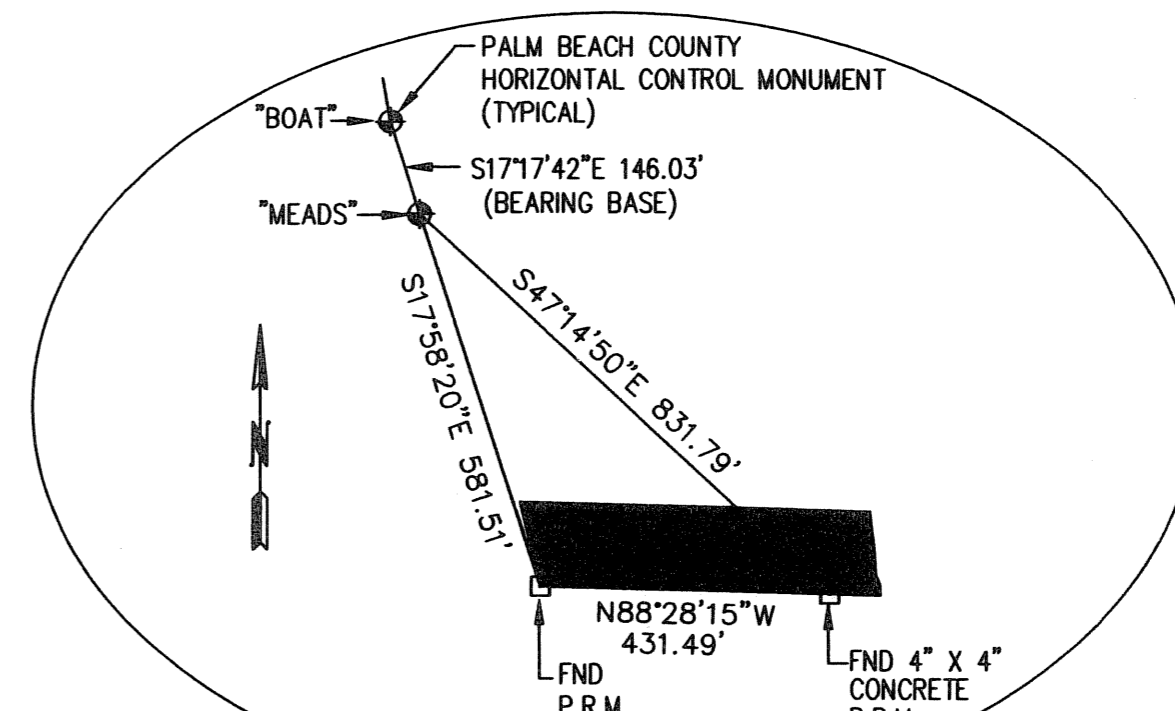
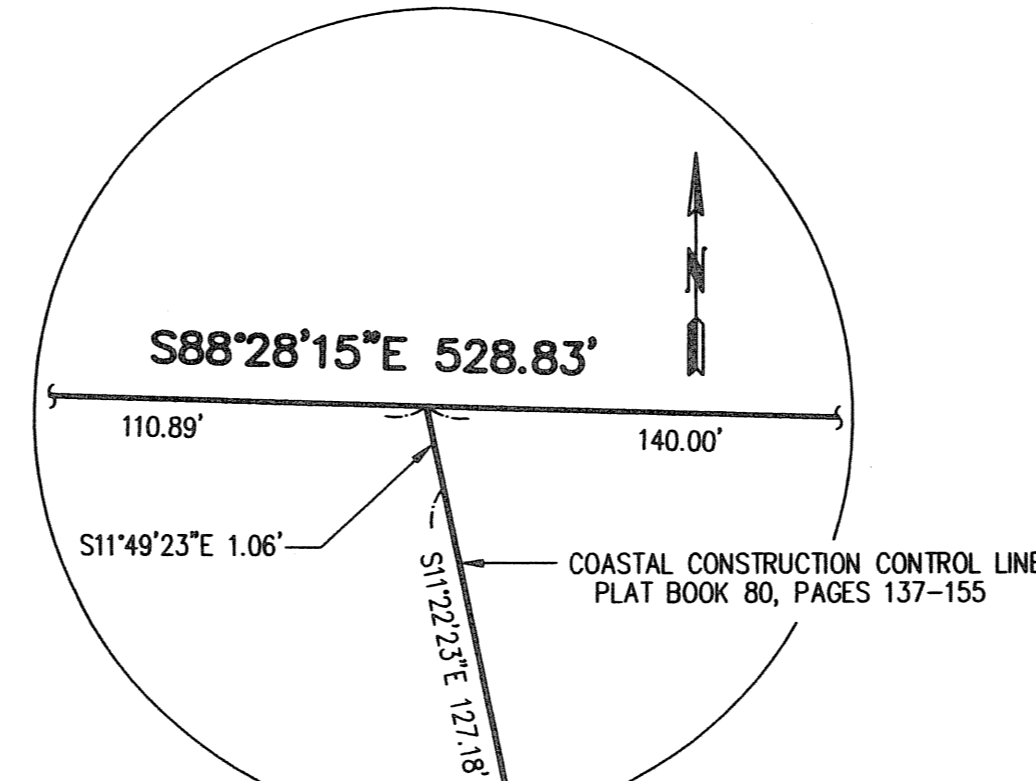
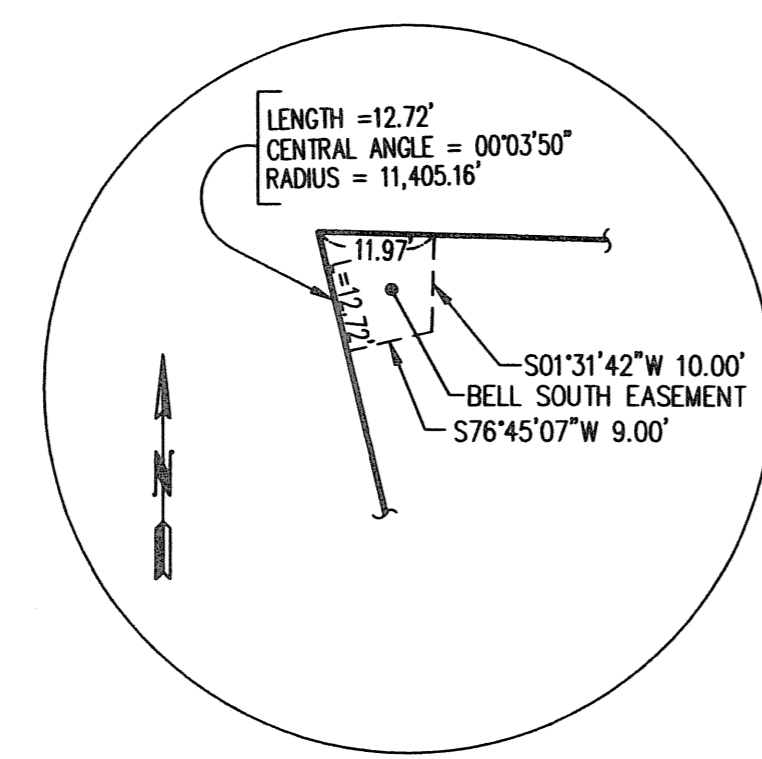
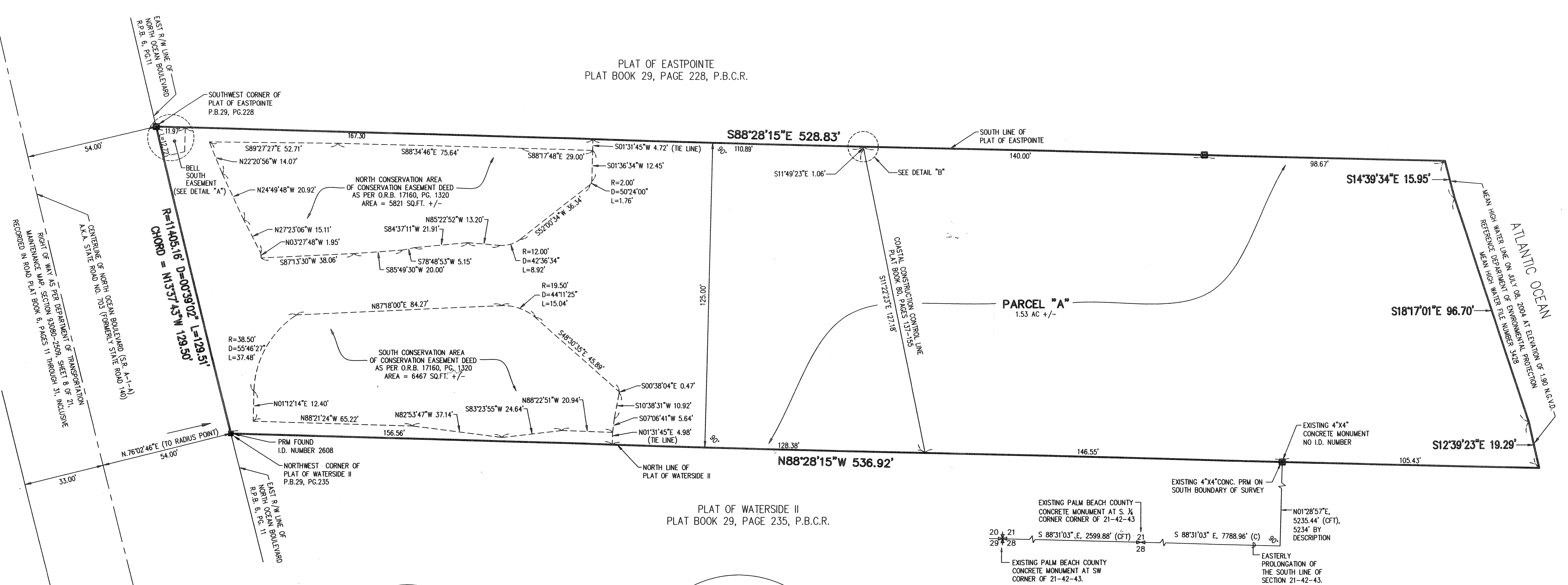
GRAPHIC SCALE



PLAT OF EASTPOINTE
PLAT BOOK 29, PAGE 228, P.B.C.R.

PLAT OF WATERSIDE II
PLAT BOOK 29, PAGE 235, P.B.C.R.

PARCEL "A"
1.53 AC +/-



LEGEND

☉	CENTERLINE
D	CENTRAL ANGLE
R	RADIUS
L	ARC LENGTH
CH	CHORD BEARING
O.R.B.	OFFICIAL RECORD BOOK
P.B.	PLAT BOOK
PG.	PAGE
R/W	RIGHT-OF-WAY
S.R.	STATE ROAD
AC	ACRE
SQ. FT.	SQUARE FEET
C	CALCULATED
CFT	CALCULATED FROM FIELD TRAVERSE
P.B.C.R.	PALM BEACH COUNTY RECORDS
R.P.B.	ROAD PLAT BOOK
N.G.V.D.	NATIONAL GEODETIC VERTICAL DATUM
PRM	PERMANENT REFERENCE MONUMENT
I.D.	IDENTIFICATION NUMBER
☐	PERMANENT REFERENCE MONUMENT FOUND
☐	PERMANENT REFERENCE MONUMENT SET
☐	(4" X 4" CONCRETE MONUMENT WITH BRASS DISK STAMPED PRM - LB6599)

THIS INSTRUMENT PREPARED BY:
James A. Davis, P.S.M.
CH2MHill-WPB
1 Harvard Circle
Professional Surveyor and Mapper
Florida License Number LS4609
West Palm Beach, Florida, 33409